

MERKEL CELL CARCINOMA

ECPC AWARENESS CAMPAIGN

JOIN THE CAMPAIGN!

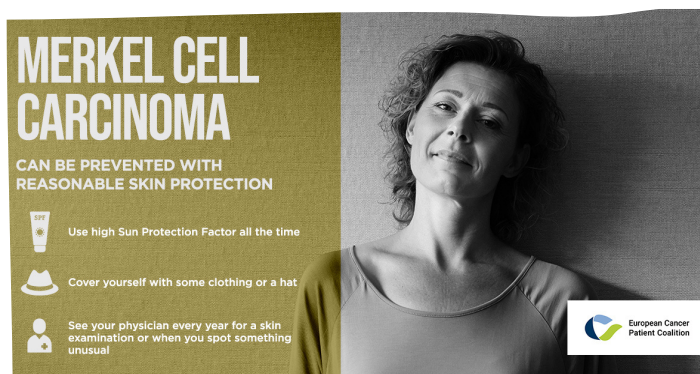
Merkel Cell Carcinoma (MCC) is a type of skin cancer that can progress and spread rapidly. It is difficult to treat when detected later. ECPC emphasises the importance of educating the general public about prevention, self-examining and warning signs. Merkel Cell Carcinoma, as other types of skin cancer, can be detected early as this cancer develops on outside of the body. With early detection, MCC can be cured successfully. Moreover, it is possible to reduce the risk of developing MCC by taking preventive measures. Therefore ECPC is launching a social media campaign to bring the attention of a broader audience to this rare and aggressive disease.

DOWNLOAD THE IMAGES HERE

SUGGESTED SOCIAL MEDIA CAPTIONS:

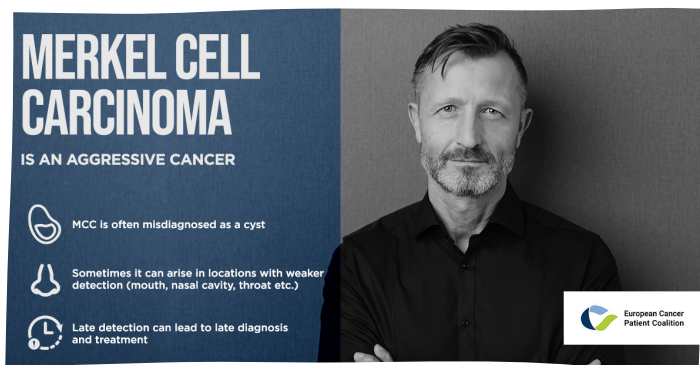
Do you know what #MerkelCellCarcinoma is? It is an aggressive form of #skincancer that can be prevented with skin protection.

👉 Use sun protection and protect yourself 🧢
<https://ecpc.org/merkel-cell-carcinoma-awareness-campaign/>



Early diagnosis is essential as #MerkelCellCarcinoma can rapidly spread. Delays in detection hamper the possibility of successful treatment 🚑

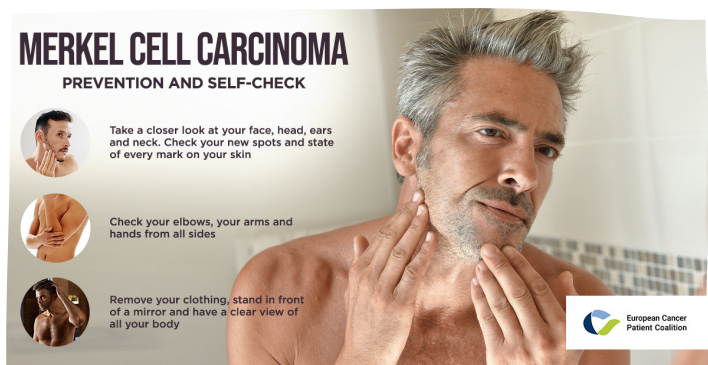
🔍 Do you want to know more about #MerkelCellCarcinoma? ➡ <https://ecpc.org/merkel-cell-carcinoma-awareness-campaign/>



💡 Self-examination is crucial in order to get an early diagnosis of #MerkelCellCarcinoma

🔍 Examine your body for new spots and marks

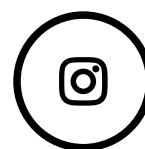
👉 Take a look here for more info:
<https://ecpc.org/merkel-cell-carcinoma-awareness-campaign/>



MERKEL CELL CARCINOMA

ECPC AWARENESS CAMPAIGN

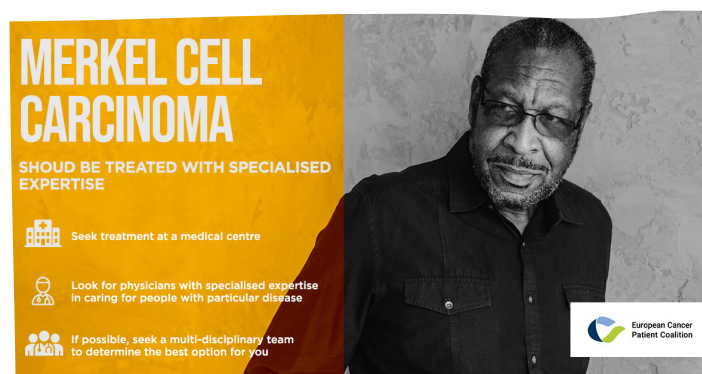
Post our campaign forward or share it from our social media accounts, just click on any of the social media icon:



Seek expert treatment if you see something unusual on your skin. As #MerkelCellCarcinoma is an aggressive but uncommon form of #skincancer it is the best to seek a multidisciplinary team to treat you.

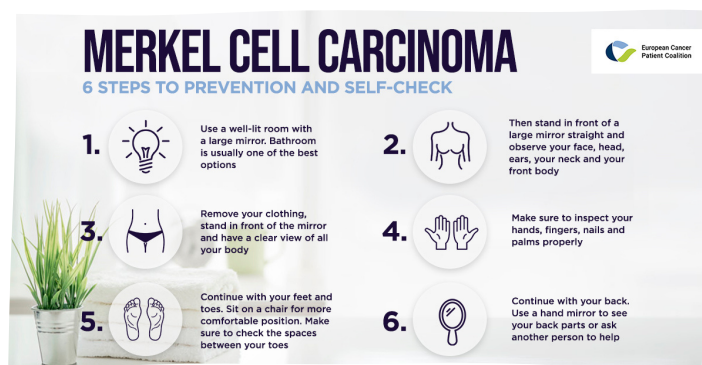
Experts know what is best for you!

➡ <https://ecpc.org/merkel-cell-carcinoma-awareness-campaign/>



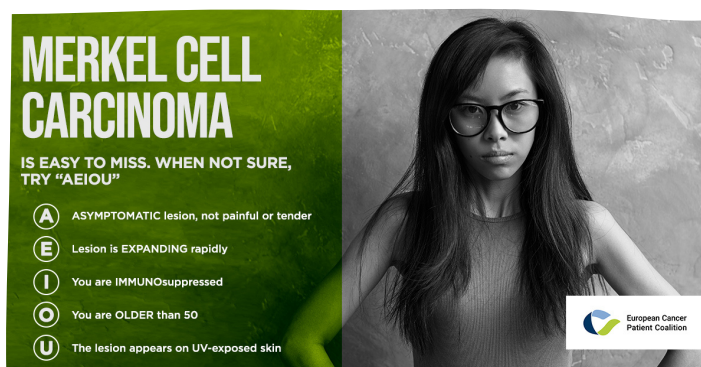
🔍 Take a look on this infographic 📄 and discover 6 steps to prevention and self-check of #MerkelCellCarcinoma.

More info: <https://ecpc.org/merkel-cell-carcinoma-awareness-campaign/>



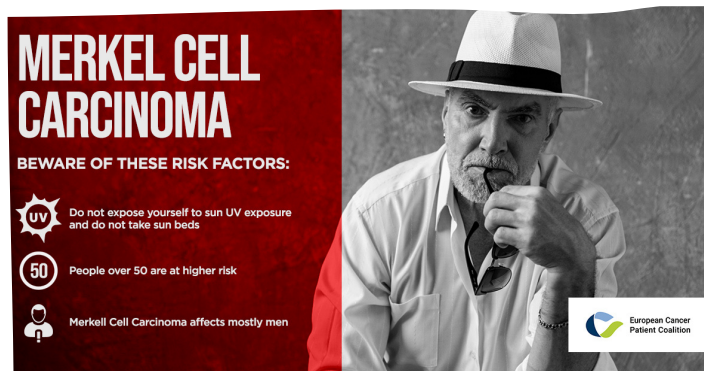
When something unusual is appearing or changed, do not wait and ask your dermatologist for advice.

📌 What are the warning signs of #MerkelCellCarcinoma? ➡ <https://ecpc.org/merkel-cell-carcinoma-awareness-campaign/>



MERKEL CELL CARCINOMA

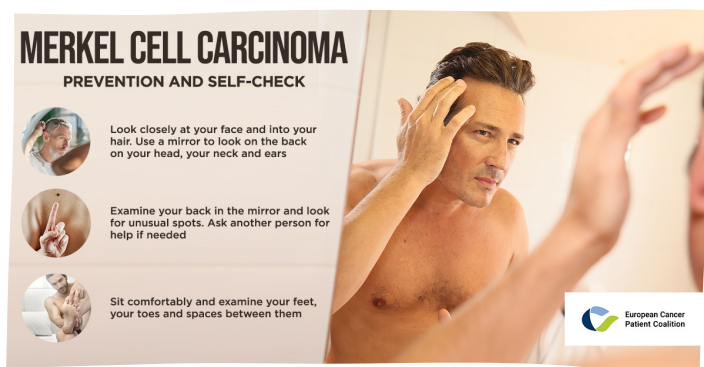
ECPC AWARENESS CAMPAIGN



#MerkelCellCarcinoma is an aggressive type of #skincancer but, if detected early, it may be curable.

Prognosis depends on several factors. Would you like to know more about the #MerkelCellCarcinoma?

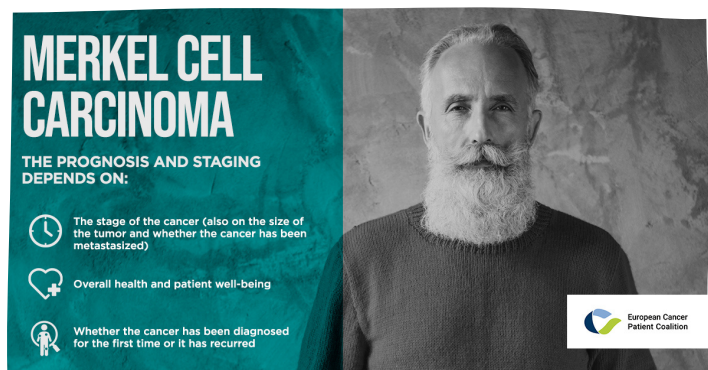
<https://ecpc.org/merkel-cell-carcinoma-awareness-campaign/>



Prompt detection of #MerkelCellCarcinoma is very important!

💡 It may be curable when detected early, self-examine your body 🧑

📄 ➡ <https://ecpc.org/merkel-cell-carcinoma-awareness-campaign/>



Do you know what the risk factors of #MerkelCellCarcinoma are? ➡

<https://ecpc.org/merkel-cell-carcinoma-awareness-campaign/>

It affects mostly men and people +50 are at higher risk. Remember to protect your skin! 🧢



European Cancer
Patient Coalition

Stay in touch with us!

www.ecpc.org
info@ecpc.org
+ 32 (0) 2 721 41 14

European Cancer Patient Coalition
Rue Montoyer 40
1000 Brussels
Belgium

Facebook: @ECPCfb
Twitter: @cancereu
LinkedIn: @european-cancer-patient-coalition
Instagram: @ecpcoalition