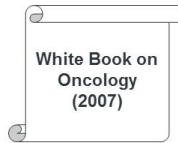


From Europe to National level: evidence-based policies

Marc Van den Bulcke
19 November 2014

In-depth interviews

Scientific Evidence



WHO – EU recommendations

Discussion Platforms

Experts

Stakeholders

Feasibility discussion, validation of priorities, social relevance in collaboration with all (scientific) experts and best practices

Cancer Plan
(actions & measures)

Yearly status report
Recurrent Impact analysis
Expert thematic working groups

**Belgian long-term strategy in
Cancer Control**



Cancer Plan in Belgium (2008):

General organisation:

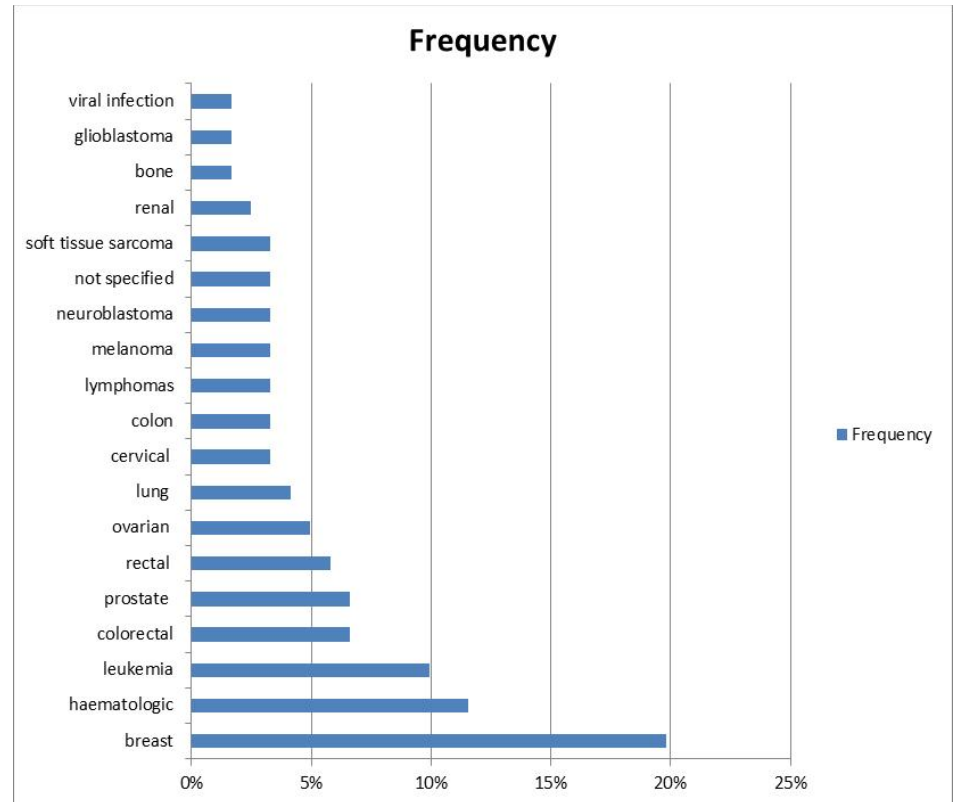
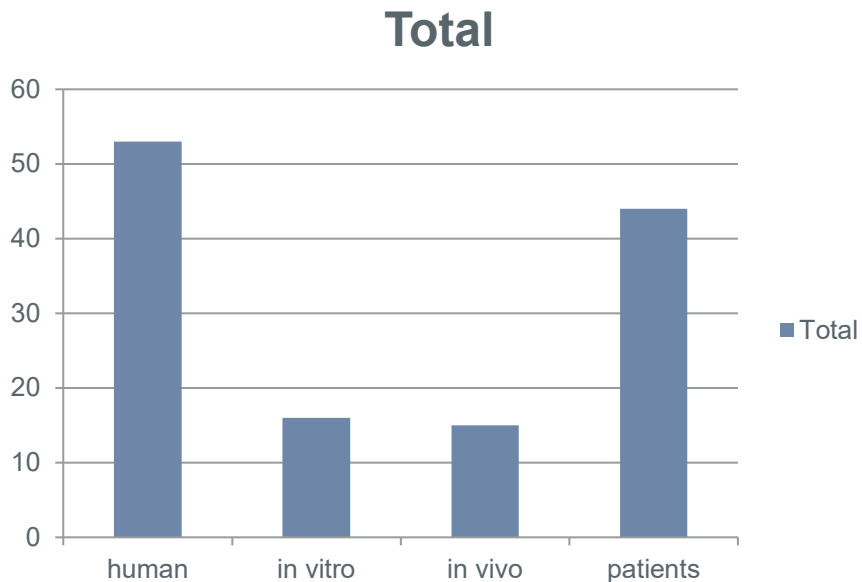
- **3 domains:** 'Prevention and Screening', 'Care', 'Research and Innovation'
- **32 actions** covering **78 measures**
- managed by the Ministries of Public Health and Social Affairs and followed up by the Cancer Centre (in collaboration with an Advisory Board and a Coordination Platform)

Status of Implementation: by **2014**, all actions have been addressed.

The **Cancer Centre** was installed in 2009.

Action 29: Translational research

60 projects in period 2009-2015



Cancer Plan & the 5 TWGs



www.wiv-isp.be/cancer



Below you will find all the presentations shown on the symposium 'Evaluation Cancer Plan':
The documents are divided into three parts:

- General sessions
- Pilot project of actions 21&22 and action 24 / Pilot project of action 29
- Documents of the Belgian Cancer Center

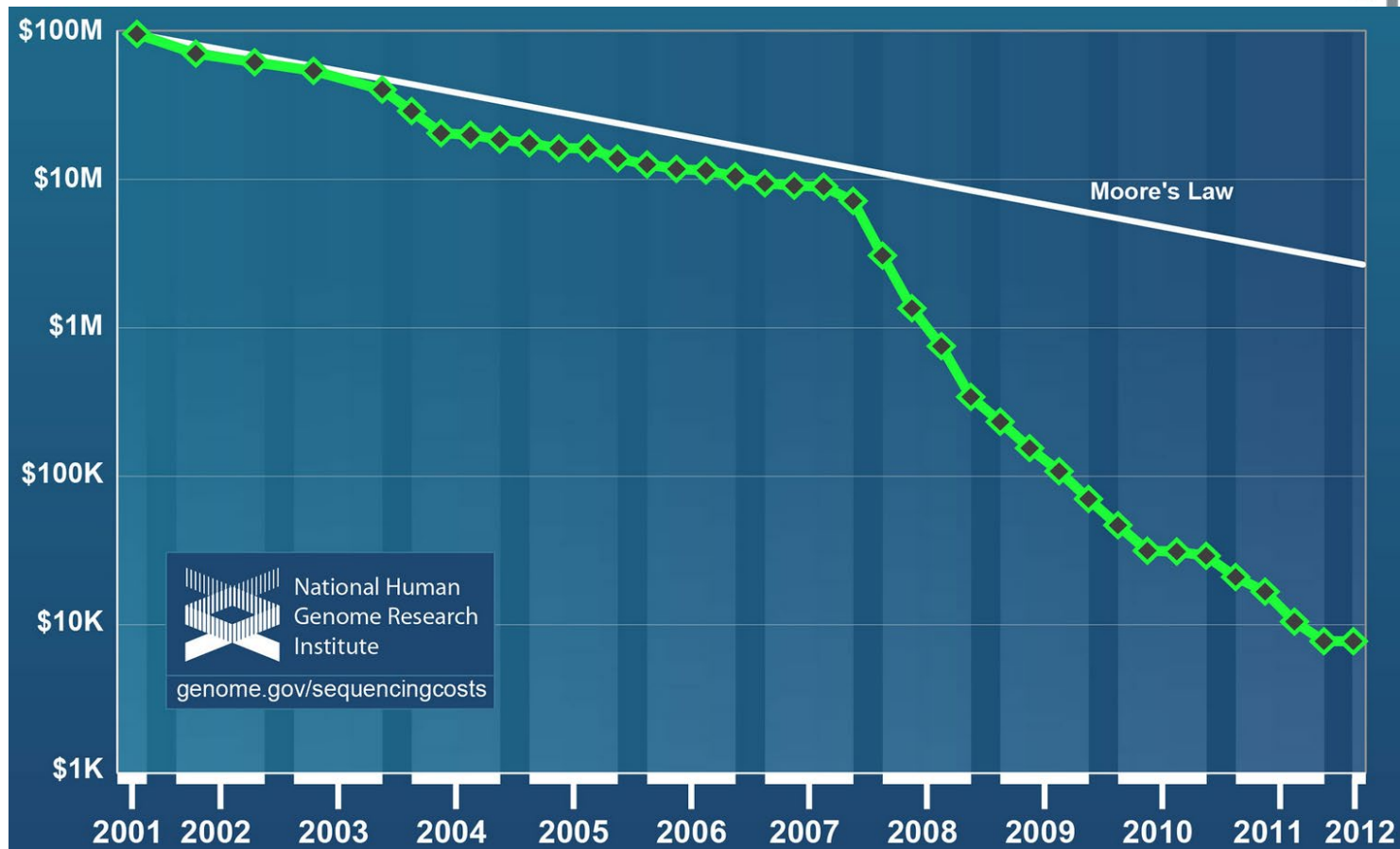
Titre	Presented By	EN	FR	NL
Bienvenue and registration of participants	Belgian Cancer Center (Belgium)			
Introduction to the programme	Dr. Johan Peeters (Scientific Institute of Public Health, Belgium)		abstract presentation	abstract presentation
The cancer burden now and in the future	Dr. Leolabet Van Eyckelen (Belgian Cancer Register, Belgium)		presentation	presentation
The impact of the Cancer Plan on health policy	Mr. Chris Decoster (Ministry of Public Health, Belgium)		presentation	presentation
Impact of the Cancer Plan on patients	Cécile Rigla (cancer survivor, Belgium)			presentation
Performance of the Cancer Plan analyses of experiences within Europe				

Call for 5 Thematic Work Groups

1. Rehabilitation
2. Hospital – home care
3. Stem cells
4. Quality system
5. Personalised Medicine

Thematic Working Group 5 'Personalized Medicine'

NGS in the CLINIC – Targeted Therapies



Today, the cost of sequencing a human genome using these NGS technologies has dipped to just under **\$8,000**

WG: Evidence-based NGS panels

		PCR			IHC	FISH
		QIAGEN therascreen	Roche cobas	bioMérieux THxID™	Dako PharmDx	Abbott Vysis
KRAS	Cetuximab	Green	Red		Grey	
	Panitumumab	Orange	Red		Grey	
EGFR	Erlotinib	Orange	Green			
	Afatinib	Green	Orange			
BRAF	Vemurafinib		Green	Orange		
	Tramatenib		Orange	Green		
	Dabrafenib		Orange	Green		
c-Kit	Imatinib Mesylate				Green	
ALK	Crizotinib					Green

Legend

- FDA approved assay available
- FDA approved assay available but not linked to therapy
- Assay available but no FDA approval
- FDA approved assay available but not standard of care

ONCOLOGY:NGS TESTING

- **Lung Cancer Panel**

- Somatic mutation testing

- *KRAS (NRAS/HRAS)*
- *EGFR*
- *BRAF*
- *PIK3CA*
- *ERBB2*
- *MET*
- *TP53*
- *AKT1*
- *MAP2K1*
- *EGFRvIII* (RT-PCR assay)

- Translocation

- *ALK* (EML4-ALK, but other partners up to 20)
- *ROS* (up to 7 partners)
- *KIF5B/RET*
- *CCDC6/RET* (aka RET/PTC1)

- Amplification

- *EGFR*
 - *MET*
 - *MAPK1* (p42/ERK2)
 - *FGFR1*
 - *FGFR2*

- **Gastrointestinal Cancer Panel**

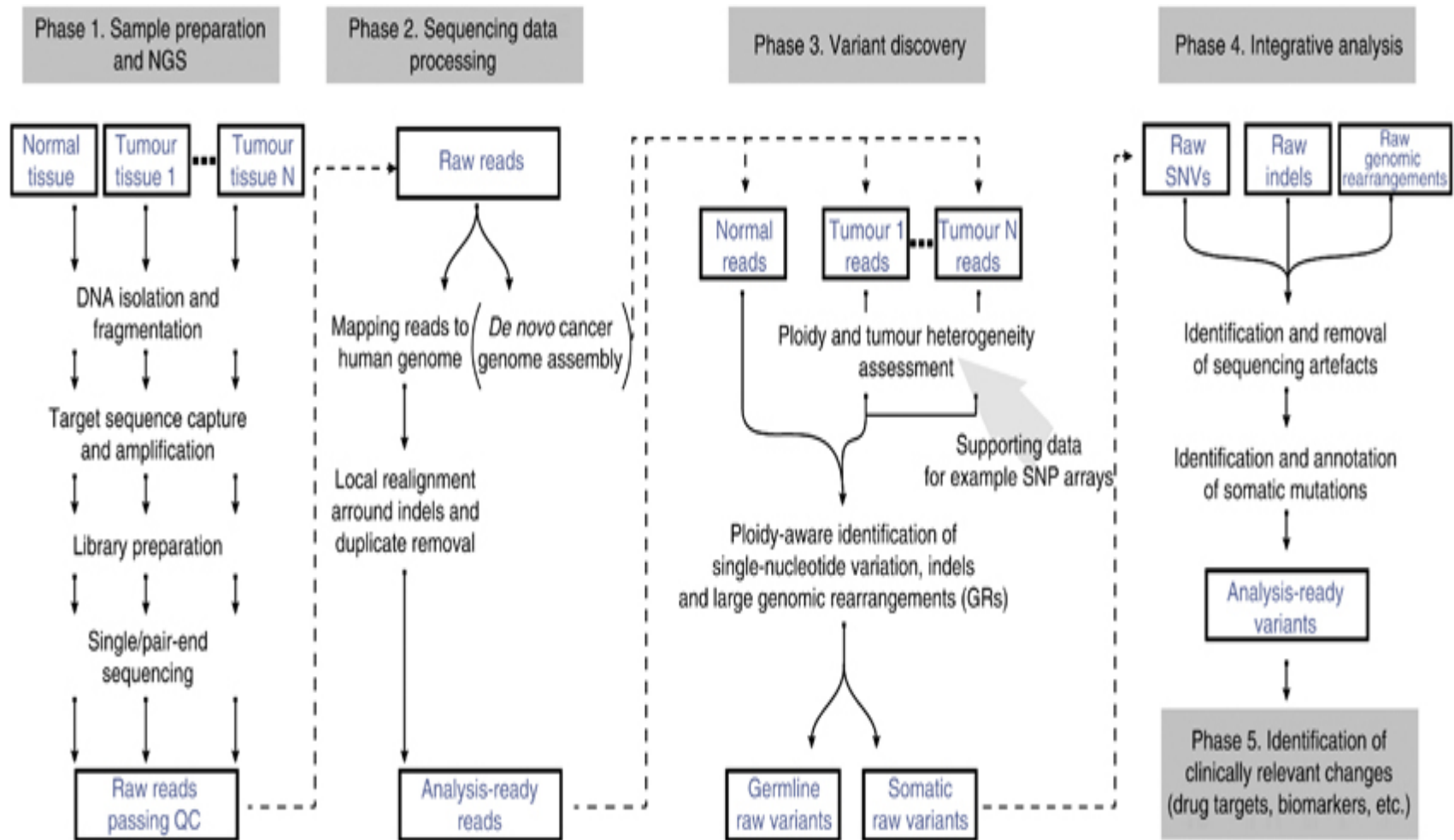
- Somatic mutation testing

- *EGFR*
- *KRAS (HRAS/NRAS)*
- *BRAF*
- *PIK3CA*
- *TP53*
- *ERBB2*
- *MET*
- *KIT*
- *PDGFRA*
- *AKT1*
- *PTEN*
- *APC*

- Amplification/Deletion

- *ERBB2*
- *IGF2* (11p15.5)
- *PTEN*
- *MDM2*
- *EGFR* (rare)

The NGS workflow



*THANK
YOU*