



Nuclear medicine

A driving force in the fight against cancer

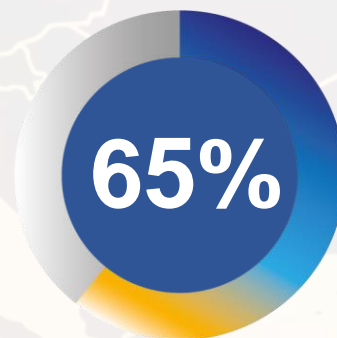
Antonis Kalemis PhD, President Nuclear Medicine Europe

Nuclear Medicine in Europe

Nuclear Medicine
diagnoses and treats

12 million patients

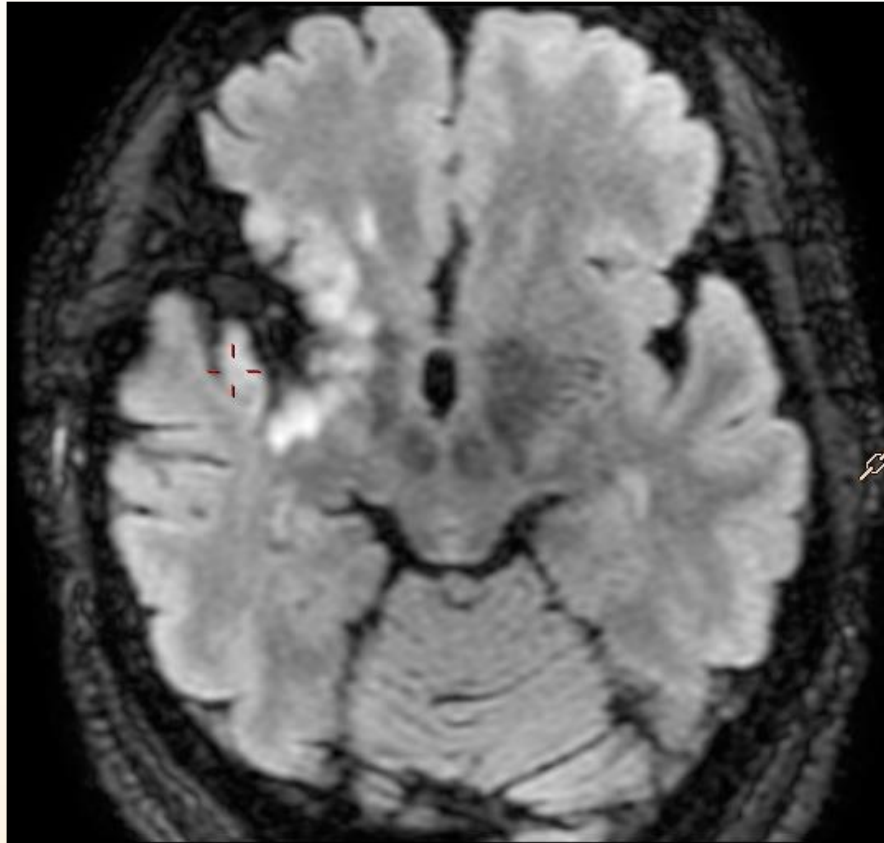
per year



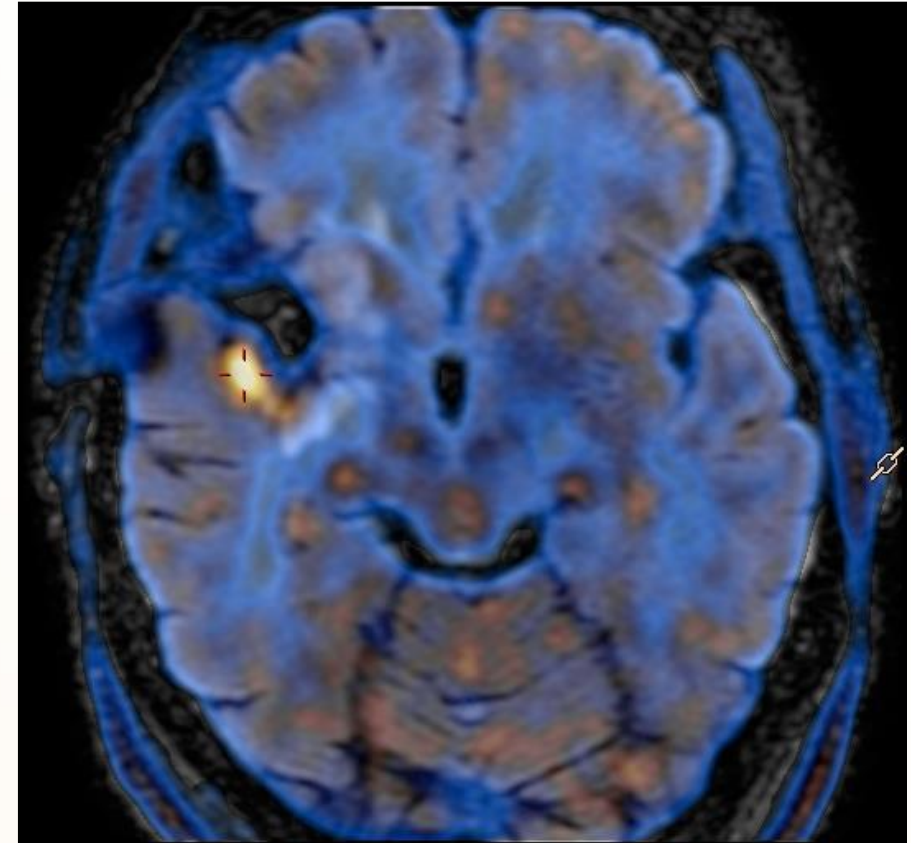
in oncology

8 million patients per year

Nuclear Medicine is effective in **Cancer Diagnosis**

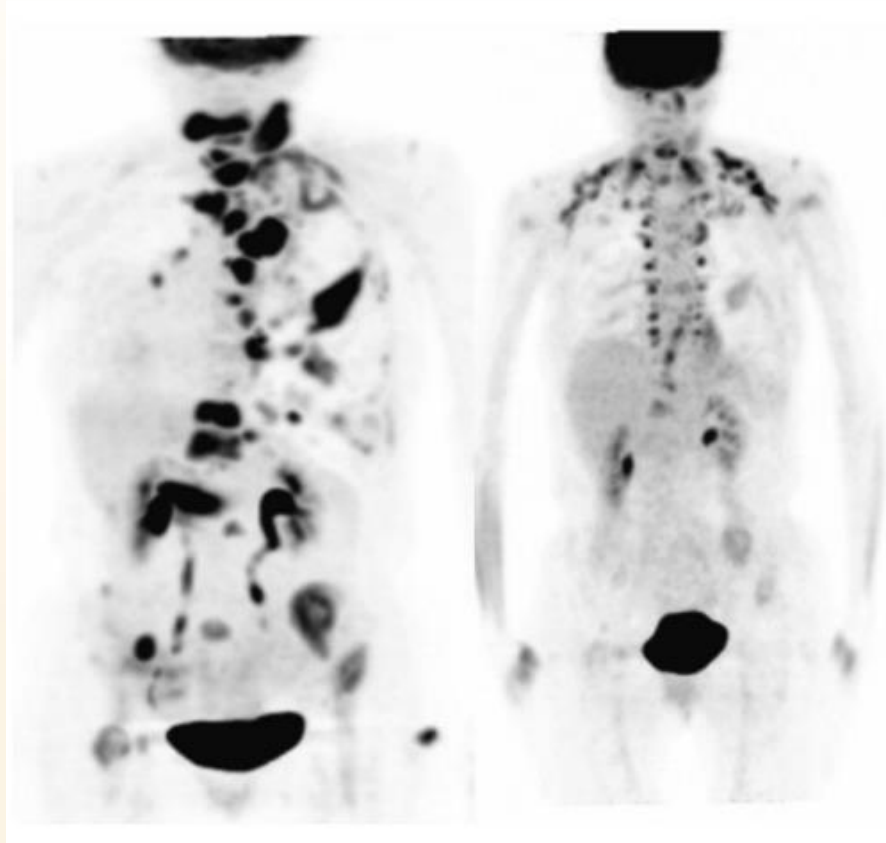


MRI



PET/SPECT

Nuclear Medicine is effective in **Guiding Therapy**



Baseline

14 days later

PET/CT scan

Example: A marketed **Immunotherapy** agent for a certain family of cancers used as 2nd line treatment.

Extremely effective for patients with a **certain genotype**.

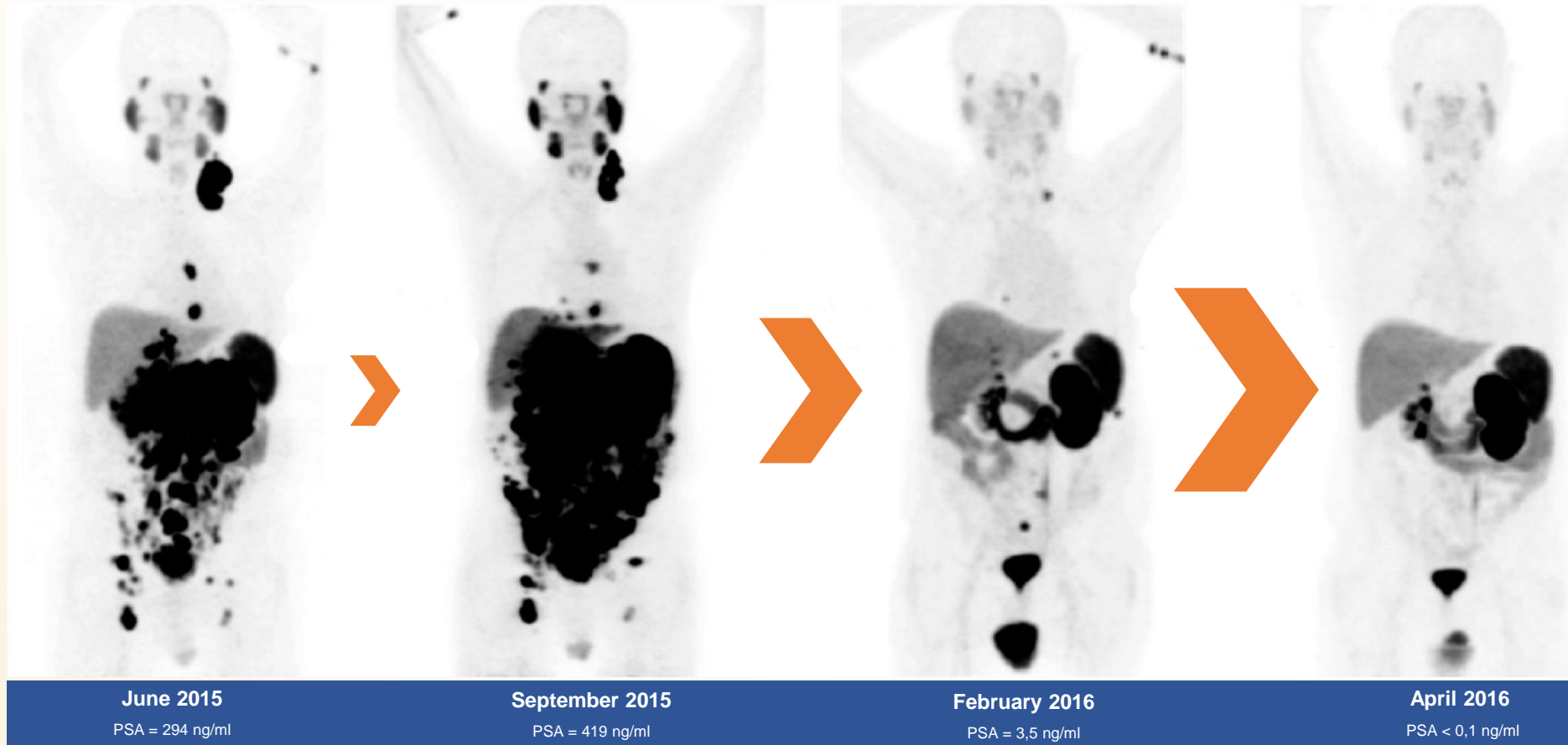
But it has also significant **Side effects**

“Does this therapy work?”

Nuclear Medicine as **Cancer Therapy**

PET/CT scans (Positron Emission Tomography)
Targeted radionuclide therapy

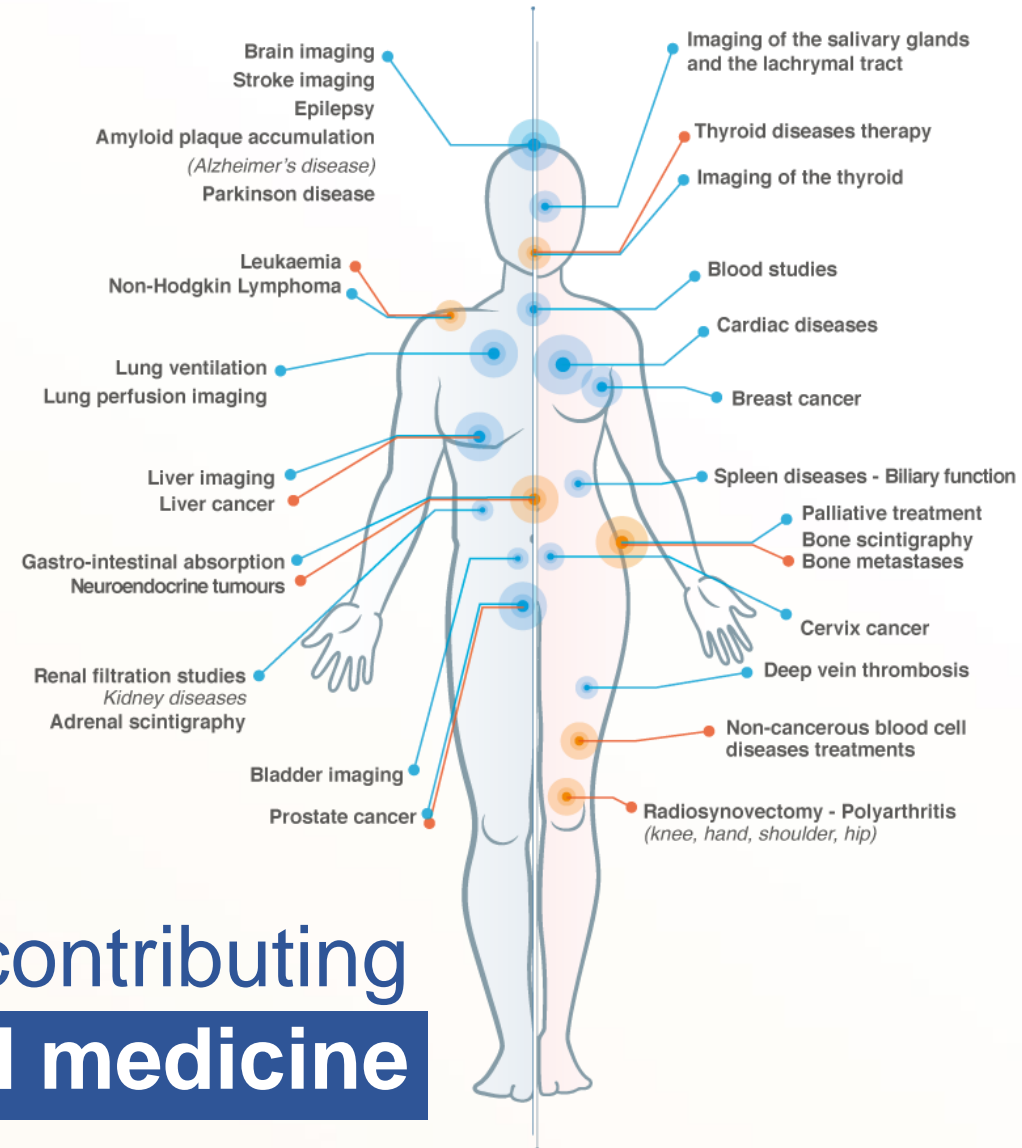
} Identical pharmaceutical with different radionuclide



Nuclear Medicine is **Diagnosis** and **Therapy**

- Early detection of cancer
- Better choice of treatments
- Effective and safe treatments
- No or very minor side effects
- Enhanced quality of life for patients

Nuclear Medicine is strongly contributing
to develop **personalized medicine**



NUCLEAR MEDICINE EUROPE

the industry association

We represents
the majority of radiopharmaceutical
& imaging equipment companies
in the field of Nuclear Medicine in Europe

