

MERKEL CELL CARCINOMA

ECPC AWARENESS CAMPAIGN

JOIN THE CAMPAIGN!

Merkel Cell Carcinoma (MCC) is a type of skin cancer that can progress and spread rapidly. It is difficult to treat when detected later. ECPC emphasises the importance of educating the general public about prevention, self-examining and warning signs. Merkel Cell Carcinoma, as other types of skin cancer, can be detected early as this cancer develops on outside of the body. With early detection, MCC can be cured successfully. Moreover, it is possible to reduce the risk of developing MCC by taking preventive measures. Therefore ECPC is launching the first social media campaign to bring the attention of a broader audience to this rare and aggressive disease.

DOWNLOAD THE IMAGES HERE

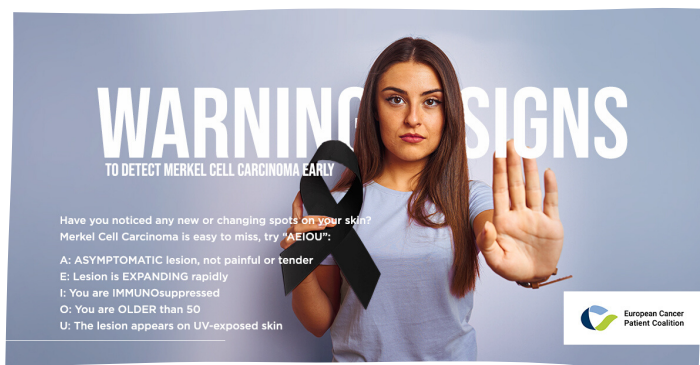
SUGGESTED SOCIAL MEDIA CAPTIONS:

The whole world is exciting about the quarantine being over soon! When you are outdoor, please stay sun-safe **#MerkelCellCarcinoma** is an aggressive form of **#skincancer** that can spread quickly. Be aware of the **#riskfactors** & please share our campaign <https://bit.ly/3fC0fx7>

Prof. Veronique del Marmol: "It is important to self-examine your skin once a month. Ask your partner for help or use a mirror. When something unusual is appearing or changed, don't wait & ask your dermatologist for advice." **#MerkelCellCarcinoma** **#skincancer** <https://bit.ly/3fC0fx7>

To protect your skin make these habits part of your daily health care routine!

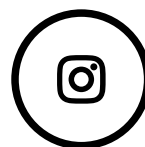
Please share awareness of **#MerkelCellCarcinoma** **#skincancer** <https://bit.ly/3fC0fx7>



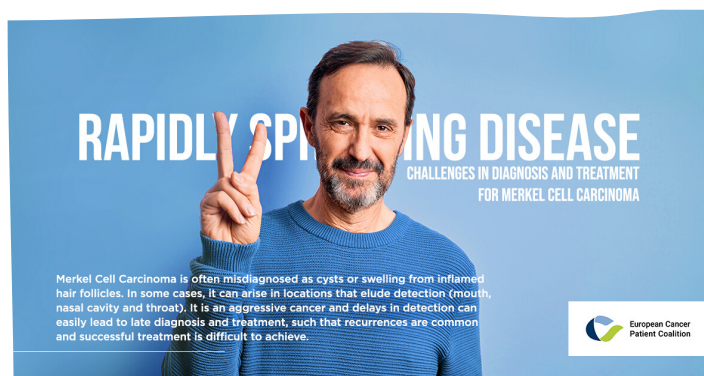
MERKEL CELL CARCINOMA

ECPC AWARENESS CAMPAIGN

Post our campaign forward or share it from our social media accounts, just click on any of the social media icon:



Scroll down for our social media calendar



Early diagnosis matters! **#MerkelCellCarcinoma** that has not metastasized has an expected 5-year survival rate of 76%. In case the disease has metastasized to more than one lymph node, this rate is less than 50% **#skincancer**

Support our campaign <https://bit.ly/3fC0fx7>



#MerkelCellCarcinoma may be curable when detected & treated early but it is aggressive **#skincancer** & can advance rapidly. Prompt detection and removal are especially important!

Share our campaign <https://bit.ly/3fC0fx7>



Treatment of **#MerkelCellCarcinoma** is based on a stage of the disease, as well as the overall health & well-being of the patient. As it is an aggressive but still an uncommon form of **#skincancer** it is the best to seek a multi-disciplinary team to treat you <https://bit.ly/3fC0fx7>

MERKEL CELL CARCINOMA

ECPC AWARENESS CAMPAIGN

MAY 2020

MON	TUE	WED	THU	FRI	SAT	SUN
18	19	20	21	22	23	24
			X	X		
25	26	27	28	29	30	31
X	X		X	X		



European Cancer
Patient Coalition

Stay in touch with us!

www.ecpc.org
info@ecpc.org
+ 32 (0) 2 721 41 14

Facebook: @ECPCfb
Twitter: @cancereu
LinkedIn: @european-cancer-patient-coalition
Instagram: @ecpcoalition

European Cancer Patient Coalition
Rue Montoyer 40
1000 Brussels
Belgium

MERCK



ECPC acknowledges the support of our
sponsors for the Merkel Cell Carcinoma
Awareness campaign.